

2008 *Annual Report*

FRIENDS OF CHRIST'S HOSPITAL





Chairman's Review

THIS IS THE second annual report of Friends of Christ's Hospital, a charitable organization for resident Old Blues (alumni) and supporters of Christ's Hospital in the U.S.A. The report's purpose is to communicate our accomplishments, to provide an understanding of our mission to potential donors, and to recognize those who have loyally and generously given their support.

2008 was another good year for FCH. We did not repeat the large Founder's Day dinner of 2007 with CH leaders in attendance but did expand community events, communications, and Transatlantic visits. Four social events in Baltimore, Stanford, New York, and Washington attracted a total of 65 U.S. Old Blues, students, visitors, and friends. The first Transatlantic Exchange dinner, held in Baltimore's Mt. Vernon Club, featured the Senior Grecian, another school monitor, and nine students. We increased communication to Old Blues with two excellent newsletters and our first FCH Annual Report. The Annual Appeal matched the prior year in donor numbers and, if one major one-time gift in 2007 is excluded, improved the value of grants to CH thanks to a stronger dollar.

My deep thanks go to the hard working and generous FCH Board and to all of our other donors who continue to help sustain the vision that is Christ's Hospital.

Gratefully,

John Doyle,
Chairman

Save the Date!

THE HEADMASTER JOHN FRANKLIN and his wife Kim will be our guests at a Founder's Day Dinner in the New York Area on October 24, 2009. We hope to see many of you there.

Report On Giving

ALTHOUGH THE ECONOMY became increasingly dismal during the year, Friends of Christ's Hospital (FCH) received much support. In 2008, we raised \$93,632 in donations, bringing our total to over \$800,000 given to FCH by Old Blues and other friends since our founding in 2001. Donations were received from 48 of the roughly 150 Old Blues known to reside in the US, including 2 first-time donors. This donation rate of 32% equals last year's record for FCH and may well be unsurpassed by any other group of Christ's Hospital alumni.

All together, 137 U.S. donors (82 of them Old Blues) have supported Christ's Hospital financially since 1998, either through the British Schools and Universities Foundation or through Friends of Christ's Hospital. This greater than 50% overall donation rate for Old Blues in the U.S. is truly remarkable thanks importantly to the American English-Speaking Union exchange scholars who attended CH for a year from the late 1940s through the early 1970s.

2008 Old Blues Donors

WE GRATEFULLY ACKNOWLEDGE the donations that Friends of Christ's Hospital received in 2008 and early 2009 from the following Old Blues:

- | | |
|-------------------------------------|--|
| John Allan-Smith (Tha, ThB 1986-93) | Kenneth Northcott (BaB 1934-39) |
| Michael Allen (MaA 1949-57) | Sally Knatchbull-Hugessen O'Brien (5s 1970-77) |
| Jane Armistead (8s 1954-63) | Peter O'Driscoll (PrepB, PeB 1938-45) |
| Jim Bell (MaA 1957-58) | Randall Peart (MaB 1945-52) |
| Alan Blackmer (MdB 1955-56) | Theresa Perlis (3s 1953-60) |
| Grant Bruton (ThA 1948-49) | Patricia Stockton Plaskett (5s, 6s 1949-56) |
| Chris Buggé (MaB 1956-63) | Moyna Prince (5s, 3s 1949-55) |
| Raymond Clarke (BaA ThB 61-68) | Lance Reynolds (Prep A, Md B 1949-58) |
| Gary Connelley (BaB 1952-57) | David Shears (Prep A, PeA 1935-44) |
| Stephen Coller (ThA 1978-84) | Bill Sladen (Prep A, PeA 30-37) |
| Heather Day (5s, 8s 1960-64) | Geoffrey Summers (LaA PeA 54-62) |
| David Dixon (MdB 86-93) | Eric Taylor (CoLA 39-44) |
| John Doyle (PrepB, MdA 1940-48) | Roger Thomas (PeB 1952-60) |
| Michael Felix (PeA 1934-40) | Kip Thompson (CoLA 68-69) |
| Anthony Furnivall (LaA 61-68) | Sophie Till (4s, BaB 1982-89) |
| Alice Godfrey (4s 1943-49) | Trevor Tomkins (MaA 1960-66) |
| Peter Hebben (MaA 1947-52) | Carl Wells (MdB 51-52) |
| Bryan Hooper (PeA 1951-60) | David Van Wyck (PeB 67-68) |
| David Jeal (PeA 1951-59) | Melissa Whichelow (CoLA 1982-89) |
| Richard Johnson (LaA 1951-61) | Peter Wiggins (CoLA 1947-48) |
| Simon Kerruish (MdA 1968-74) | Keith Worker (CoLA 1971-78) |
| Kate Kerr (4s, BaB 1983-90) | Peter Wood (Prep A, ThA 1947-57) |
| Robin Kinloch (ThA 1949-56) | Deborah (Rosh) Wright (1s, 7s 1957-66) |
| Maggie McCurry (5s, 6s 60-66) | Henry Young (MdA 84-91) |
| Ken McDonald (LaB 1950-51) | |



Other Friends Who Gave to FCH

KITT BAND (in memory of her husband Bill Band*, MaA 1936-44), Jeffrey Doyle, Peter Doyle, Kristina Esmiol (Estate of Exchange Scholar Pattison Esmiol (ThA 1950-51)), Patricia John, Ann McDonald, Microsoft Foundation, Investment Technology Group, Inc., and Gordon Russell. We also thank the following friends of Richard Kroll who made donations to FCH in the spring of 2009 in his memory: Cherry Barney, Ritu Hasan, Jayne Lewis, Eugene Navakas, Linda and Robert Newsom, Mary Toliver, Brook Thomas, and Stacy Vanbeek.

There are a number of individuals to whom we owe special recognition for their generosity in 2008:

- ♦ **Grant Bruton**, ESU scholar at Christ's Hospital in 1948-49, for both his personal generosity and as a trustee of the McBride Foundation that have, between them, contributed in all eight years that FCH has existed
- ♦ **John Doyle** and **David Shears**, the only individuals to have contributed in all eight years that FCH has existed
- ♦ **Jim Bell, Peter Hebben, Bryan Hooper, Robin Kinloch, Kenneth Northcott, Patricia Stockton Plaskett, Lance Reynolds, and Roger Thomas**, who have all contributed to FCH for the last seven successive years
- ♦ **Stephen Coller**** who has made seven out of eight pledges toward a FCH Donation Governorship
- ♦ **Trevor Tomkins** who has made the first of five pledges toward a FCH Donation Governorship
- ♦ **Michael Allen, Chris Bugge, and John Doyle** who all made one time payments to add an additional presentation to their existing Donation Governor rights

*Bill's obituary may be found in The Old Blue of September 2008. **Stephen made his final donation in February 2009 and the FCH Board has forwarded his name for nomination to the Court of Governors.

Accomplishments

WITH THE ASSISTANCE of FCH, The Transatlantic Student Exchange Program, is now in its third year. Christ's Hospital students Tom Poulton and Rebecca Goodman spent their Lent term break at Gilman School and Bryn Mawr, respectively. Ryan Gisriel, a junior at Gilman, and Taylor Adams, a Bryn Mawr junior, spent the last month of the summer term at Christ's Hospital (see our June and November 2008 newsletters).

One student, Jordan Davis-Bernier, presented by FCH Governor Roger Moseley began his first year at Christ's Hospital school in September 2008, in Roger's old house, Middleton B.

Also entering MdB was Michael Fox, the first Governor Presentee at the 6th form level. He is taking Biology, Chemistry, Mathematics and Physics at AS levels, perhaps following the example of his Governor, Michael Allen, himself a former Science Grecian.

FCH Sponsored Events during 2008 included a Transatlantic Exchange Dinner in Baltimore in February, a Founder's Day Lunch in California in October, and a Dinner and Reception at the Cosmos Club in Washington, D.C., to honor Rob Gauntlet and James Hooper as National Geographic Adventurers of the Year. Michael Allen personally hosted an Old Blues get together in New York in November to

support a team of UK Old Blues running in the New York marathon. John Allan-Smith personally provided lunch and an introduction to Wall Street to twelve current pupils visiting the U.S. under the guidance of Coleridge B housemistress Val Durkan.

We developed and mailed two issues of our newsletter, "Blues: Across the Pond News", and our 2007 Annual Report to U.S. alumni and other friends.

Belinda Reiser (née Albinson) (4s, ColA 1979-86) is now efficiently managing our U.S. Old Blues and Friends database and providing a point of contact. Please advise her when your contact information changes (belindareiser@hotmail.com). Feel free to contact her if you are looking for U.S. Old Blue contact information and please let her know when you hear of Old Blues coming to live or study in the U.S. Belinda also surveyed U.S. Old Blues to help the Board understand how to better communicate with them, and what they enjoyed reading most (information about other U.S. Old Blues, and past and upcoming FCH events).

While FCH can take no credit for his accomplishment we note with pleasure and pride Ben Allison's (ThA, GreW 1999-2006) performance on the Davidson University basketball team. He is, we believe, the first Old Blue to play in a Division 1 NCAA sport.

Grants

The FCH Board of Directors approved **Grants to The Christ's Hospital Foundation** totaling \$134,000 in 2008, as follows:

- ♦ **The 100 Year Appeal**
Building renovation and new buildings.
\$106,000
- ♦ **Direct Student Support**
\$28,000

Following final receipt of 2008 donations, the Board made further grants in January 2008 of \$15,000 toward the 100 Year Appeal and \$1,000 toward the Engineers' Fund, for a total of \$150,000.

Friends of Christ's Hospital

Directors and Officers

John Doyle,
Chairman
(PrepB, MdA 1940-48)
Portola Valley, Calif.

Michael Allen,
President
(MaA 1949-57)
Westport, Conn.

Lance Reynolds,
Secretary & CFO
(PrepA, MdB 1949-58)
Alameda, Calif.

John Allan-Smith
(ThA, ThB 1986-93)
New York, N.Y.

Jim Bell
(MaA 1957-58)
New York, N.Y.

Ansar Haroun
(MdA 1959-66)
San Diego, Calif.

Sally O'Brien
(née Knatchbull-Hugessen)
(5s 1970-77)
Baltimore, Md.

Patricia Plaskett*
(née Stockton)
(5s, 6s 1949-56)
Washington, D.C.

Trevor Tomkins
(MaA 1960-66)
Sycamore, Ill.

Peter Wood**
(PrepA, ThA 1947-57)
Center Harbor, N.H.

Deborah (Rosh) Wright
(1s, 7s 1957-66)
Atascadero, Calif.

FRIENDS OF CHRIST'S HOSPITAL is an independent association of Old Blues (alumni of Christ's Hospital) who live in the United States. It was formed in 2001 by a group of Old Blues who came together to advance the school's major fundraising and development initiatives and to build a strong alumni network and spirit in the United States.

Friends of Christ's Hospital provides Old Blues and others residing in the U.S. a tax-efficient way to support Christ's Hospital. It is a California nonprofit corporation that has been qualified as a tax-exempt public charity under sections 501(c)(3) and 170(b)(1)(A)(vi) of the Internal Revenue Code. Donations to FCH are fully tax-deductible to the extent provided by law.

Under U.S. law, while the Board of Directors of FCH will always consider the expressed preferences of its donors when making grant decisions, the Board must retain discretion and control over the use of all contributions it receives. All contributions received by FCH from solicitations for specific grants shall be regarded as for the use of FCH and not for any particular organization mentioned in the solicitation. FCH may accept contributions earmarked by the donor exclusively for allocation to one or more foreign organizations only if the Board of Directors of FCH has approved in advance the charitable activity for which the donation was made. FCH has very low operating costs. Its volunteer Board directly pays over half the organization's operating expenses in a typical year. In 2008 the Board total out of pocket expenses exceeded \$5,000.

John Allan-Smith, Ansar Haroun and Trevor Tomkins were elected to the Board in February 2009.

John, a Chartered Accountant, is a Director in the Leveraged Finance and Financial Sponsors Group of RBS plc.

Haroun is the San Diego Court Psychiatrist and possibly the only US Old Blue to have served in the US military in Afghanistan.

Trevor is the CEO of Milk Specialties Global and former Chairman of the Heifer International Foundation.

Jim Bell and Patricia Stockton were also elected to the Court Senate of the Court of Governors of the Christ's Hospital Foundation. The intent of the Senate is to provide improved communication between the Council of Almoners and the Court of Governors.

*Patricia resigned from the Board in March 2009 after the election of our three new Board members. She will complete her term on the Court Senate and continue to be the Cordon Bleu representative in Washington D.C. We thank her for her board service. **Peter resigned from the Board in December 2008 to make room for a new generation, but will continue his support of FCH. We thank him for his board service.

Support of Christ's Hospital

FCH's MISSION IS to support programs and activities of The Religious Royal and Ancient Foundation of Christ's Hospital (Christ's Hospital or CH) at Christ's Hospital in the United Kingdom or elsewhere in the United Kingdom or in the United States that qualify as charitable and educational activities under section 501(c)(3) of the Internal Revenue Code.

Christ's Hospital is the last independent boarding school providing children who are socially or financially disadvantaged with a free or heavily subsidized education. Even more true today than in 1816 when Ackermann wrote in his book on the Public Schools, "This institution has no rival, even in a country abundant above all others in charitable establishments." The school remains committed to its original ethos; the children it supports are bright and able but disadvantaged by poverty or circumstance. Based on the Foundation's assessment of need, 70% of the children joining the school at age 11 are categorized as having medium to very high levels of need. In 2007-08 only 22 families paid the full cost while 112 families made no contribution for the education, board and uniform of their children.

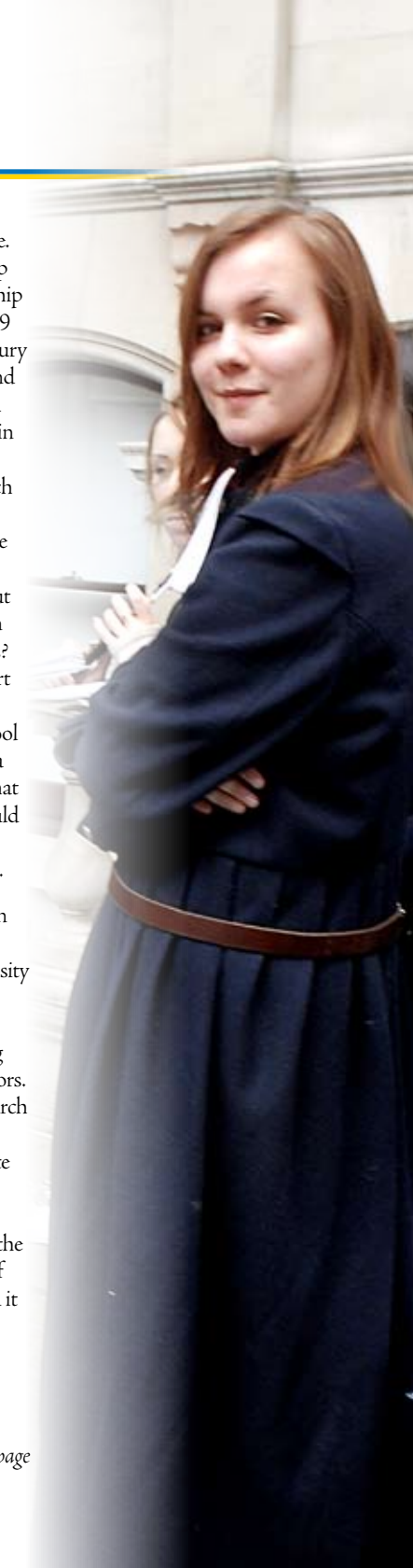
These children then flourish, academically, artistically and in athletics. At A level 75% receive A or B grades, with similar results at A* and A in GCSE.

85% of all students enter the University of their first choice. 2008 saw a choral scholarship at Oxford, an organ scholarship at Cambridge. In March 2009 1st XV captain Joe Launchbury secured his under -18 England cap and scored two tries (as a second row forward no less) in the team's first match against Japan. Accomplishments such as these are reassuring signs that CH continues to provide a first-class education and a life-changing opportunity. But will such excellence be within reach of tomorrow's students? Without the financial support of Old Blues, it will not be. Absent our support, the school would certainly carry on for a while, but it would not be what it was, and in due course would outlive its special character and, eventually, its usefulness.

The need for CH to maintain its excellence abounds. Competition for good university places is much more intense than it used to be, leading to a new flowering of fee-paying independent schools and tutors. Not surprisingly, recent research shows that the expansion of higher education since the late 1980s has disproportionately benefited those from more affluent backgrounds. Thus, the children who need the sort of education CH provides need it more today than ever before.

Meanwhile, the costs of excellence are soaring. New capital expenditures for

continued next page



continued from previous page

technology, among other things, are now required on a scale previously unimagined. Good teachers are hard to find and harder to keep, as they are constantly enticed to test their value in an active and competitive marketplace. CH's finances are being challenged by costs that increase at a faster rate than the return on its endowment. Thus, something – or someone – must “give”. It will either be the families of future pupils or it will be Old Blues and other friends of the school who are determined that Christ's Hospital not turn its back on its unique past. The issue is nothing less than enabling CH to continue providing an excellent education to those who come after us. If you are content to risk seeing the number of full fee paying pupils rise and/or the value of a CH education wane, you need do nothing. On the other hand, if you want to ensure that deserving children continue to have the unparalleled opportunity to excel that CH provides, then please join FCH in showing the CH community that U.S. Old Blues are ready to do their part to secure the school's financial future.



In Memoriam

MANY U.S. OLD BLUES met, admired and supported **Rob Gauntlett** (MaB, GreE '98-'05) when he and partner James Hooper spoke about their Everest achievement at our 2006 Founder's Day dinner and subsequently as Rob and James traversed the U.S and

the Americas on their epic 180 degree pole-to-pole journey during 2007. They returned to our 2008 Founder's Day dinner in Washington as newly minted Fellows of The Royal Geographic Society and National Geographic Adventurers of the Year.

Now we mourn Rob's tragic death and that of Old Blue friend **James Atkinson** (MaB, GreE

'99-'06) in an ice climbing accident in the French Alps in January, 2009. FCH was represented at Rob's funeral in Sussex in January and at the memorial service for Rob and James in the CH chapel on March 21st.

Our condolences and thoughts go to family and friends as we also try to help James Hooper and Lucinda Hutchins deal with their loss.

Donation Governorship

DONATION GOVERNORSHIP is a unique and highly satisfying way of supporting Christ's Hospital. Donation Governors generally are individuals who support CH by making an unconditional donation of a minimum amount to Christ's Hospital Foundation (The Foundation). Their gift is recognized by election for life to the Court of Governors. The Foundation has made a special arrangement with FCH to enable supporters of FCH to become Donation Governors.

Donation Governors have a duty to present or nominate one suitable child (not an immediate relative) for entry to the school. As long as the child passes the entrance exam and interview, he or she will be guaranteed a place at Christ's Hospital. A presentation has no financial value to parents, who will still be expected to contribute financially according to their income. The admissions office works directly with the Donation Governor to identify a small pool of applicants for presentation that meet the Governor's criteria, such as boy or girl, part of the country, single parent etc. The Governor then selects one of these, preferably after meeting the child and its parent(s), for presentation.

Donation Governors are encouraged to take an active interest in their presentees and in the life of the school. Most Donation Governors take advantage of this special opportunity to follow the growth and development of a girl or boy at today's CH, and they maintain close ties with their presentees, which often continue even after the children have left the school. One FCH Governor has said of the governor-presentee relationship, "It has been extraordinary, one of the greats of my life... I wish there were a magical way to give all Old Blues who are even considering it an infusion of the gratifying effect this experience has had on me."

Donation Governors are invited regularly to major events in the school calendar, such as St Matthew's Day and Speech Day. They are also invited to the twice-yearly meetings of the Court of Governors. The Court comprises over 600 Governors, many of whom are Old Blues. The Court of Governors elects ten members of the 23-strong Council of Almoners, who are the governing body of the Foundation.

continued next page



"I shall always be thankful to Christ's Hospital for the many opportunities I have received. Where I live, in the East End of London, none of them would have happened had I attended state schools."

– Rodney Serunjogi,
Senior Grecian, speaking at the
2009 Transatlantic Connection
Dinner in Baltimore

RICHARD WILHELM FRANCIS KROLL, (BaA, LaB 1966-71), much-loved professor of English at the University of California, Irvine, and highly-regarded scholar of Restoration and eighteenth-century British literature, died at home on 5 February, 2009 due to complications from pneumonia. Born in

Kenya, Richard taught for a year at the Starehe school for orphans in Nairobi, before going up to Cambridge in 1972. He received his doctorate from UCLA. He is survived by his wife Allison Adler Kroll and son Theodore, and remembered with affection by all of us who met him.



continued from previous page

The Court otherwise has very limited powers and duties. However, Governors have the opportunity to make their views known to the Council, and the FCH Board believes it is important that Governors who represent FCH contribute the ideas and experience of US Old Blues in this way.

How can I become a Donation Governor?

For donors contributing directly to The Foundation, the minimum donation to become a Donation Governor is the annual cost of educating a child at Christ's Hospital. For 2009, that figure is £16,500. **With the fall in the value of the pound over the last year this is approximately \$24,000, a significant reduction from 2008.**

This donation can be made in a single gift or through a commitment fulfilled over as many as seven years, and it can be made in cash or shares. The elections to the Court and right of presentation occur subsequent to the final installment. FCH and the Foundation have agreed that the total dollar figure required at the time of the pledge will hold through its completion and not fluctuate with exchange rates. A donor who has already become a Donation Governor and whose child has graduated may currently nominate another child on making a further donation of half the current annual cost.

Pursuant to FCH's arrangement with The Foundation, FCH is entitled to put forward a candidate for Donation Governor whenever it makes qualifying grants to The Foundation. FCH's candidates are elected to the Court of Governors as 'Representing Friends of Christ's Hospital'. Donors who are interested in becoming a candidate should indicate their interest to FCH. It is the FCH Board's policy that an individual who donates the minimum amount to FCH and is willing and able to serve will be nominated for election to the Court of Governors, once FCH has made one or more grants of that amount to CH. Other nominations that FCH is entitled to make because of its grants to CH are offered to individuals who have been major donors to FCH and/or have made substantial contributions of time and effort toward the achievement of its objectives. Fourteen individuals nominated by FCH have been elected Donation Governors since FCH's founding in 2001.

For more information about Donation Governorships, please contact Lance Reynolds at (510) 814-1942 or email: lancereyno@sbcglobal.net.

Friends of Christ's Hospital 2008 Financial Statement

CHECKS WRITTEN AND mailed to FCH in the latter half of December, although tax deductible to the donor may not clear until the following year. If these amounts are substantial, as they were in 2007, the grants shown on our Federal Return (Form 990) will be less than the grants actually made from the donations received once the checks have cleared and the Board has approved any grant requests from the Christ's Hospital Foundation.

As mentioned, the Board approved a grant in January 2008 of \$66,000 from donations received at the end of 2007. This accounts for our 2008 Disbursements being greater than our receipts. We made further grants to the Foundation totaling \$21,000 in January and February 2009. Our intent is to hold our account balance at roughly \$10,000.

Our Legal Services expense is attributable to selection of new Counsel, Adler and Colvin, to ensure that our donation and grant processes are fully compliant with the Internal Revenue Code.

Conscious of the current economic environment we are combining aspects of our normal early summer newsletter into this annual report to reduce printing and mailing costs.

<u>Account Summary</u>	<u>Form 990EZ</u>
Beginning Account Value.....	\$ 79,691
Receipts.....	93,632
Disbursements.....	145,958
Interest Income.....	399
Ending Account Value.....	\$ 27,725

<u>Grants</u>	<u>Form 990EZ</u>
Christ's Hospital Building Fund.....	\$106,000
Direct Student Support.....	28,000
Program Service Total.....	\$134,000
Program Service as % of Receipts.....	143%

<u>Expenses</u>	<u>Form 990EZ</u>
Publications Printing & Mailing.....	\$ 4,239
Legal Services.....	4,298
Software.....	217
Event Subsidies.....	3,204
Administration Total.....	\$11,958
Administration as % of Receipts.....	13%

For a copy of our 2008 Federal Return please contact Lance Reynolds at lancereyno@sbcglobal.net. Earlier returns are available on the GuideStar website www.guidestar.org

Colophon

The text and headings are set in Adobe Jenson Pro typeface. Designed by Robert Slimbach, Adobe Jenson Pro captures the handcut essence of Nicolas Jenson's roman and Ludovico degli Arrighi's italic typeface designs in a digital set of fonts. The body type is set 10/11.

Credits

*Photography – Covers and pages 2, 5, 6: John Mitchell
Design and printing – Creative Associates Inc.
www.creative-associates.net*



Friends of Christ's Hospital
177 Ramoso Road
Portola Valley, California 94028